

What Product do I need?

Product	ProtectaMat	CleanZone	WorkZone
			
Type	Loose Laid	Fixed	Fixed
Designed for	People (max 20)	People & Light Carts	People & Heavier Carts (Straight line only)
Size * Bespoke sizes/shapes readily available	7mm thick, 1.2m (4ft) wide, 2m (6.5ft), 3m (10ft), or 4m (13ft) long	2.1mm thick, 1.2 (3.94ft) or 2m (6.56ft) wide, 2m (6.56ft), 3m (9.84ft), 4m (13.12ft) or 6m (19.69ft) long*	2.1mm thick, 1.2 (3.94ft) or 2m (6.56ft) wide, 2m (6.56ft), 3m (9.84ft), 4m (13.12ft) or 6m (19.69ft) long*

Size Matters

It is important to choose a large enough product for your facility, as size optimises performance, life cycle and satisfaction.

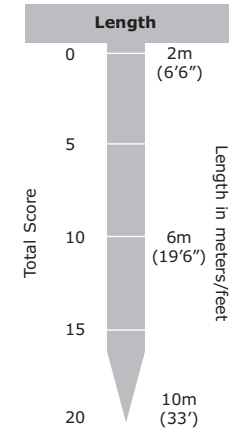
Your Dycem system needs to be unavoidable and sufficiently large to get at least six footsteps or wheel rotations on the contamination control surface.

Size is determined by the following inter-related factors:

- The physical size available.
- The number of operators & light carts per shift.
- The existing wet cleaning schedule.
- The level of cleanliness you need to achieve.

What Size do I need?

Questions?	Answer	Score
Number of people in/out per shift? (Assuming 5 entry/exits in the average shift)	0 – 10 10 – 25 25 – 50 50 – 100 100+	1 2 4 6 10
Frequency of wet cleaning (Involving a good quality detergent & squeegee dry process)?	Less than once per day Once per day Once per shift Twice a shift	10 5 2 1
	Total Score	



Cleaning

Dycem has to be cleaned regularly to remain effective. The 3 sketches below highlight the interrelationship between size and cleaning. The third diagram highlights that unless Dycem is cleaned shortly there is a risk of it becoming saturated with contamination and letting particles into your critical areas.



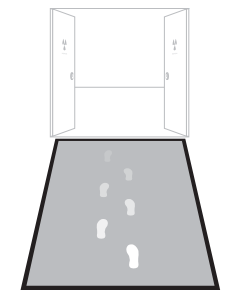
Clean Dycem
After 3 footsteps of both feet all contamination is removed.



Between cleaning
Now taking 4 footsteps of both feet to remove all the contamination.



Needs Cleaning
Now taking 6 footsteps of both feet to remove all the contamination.



Width

To ensure CleanZone & WorkZone is unavoidable and requires no overt action by personnel or carts, it is best to cover the full width of the area.

Smaller areas can be used especially where footsteps follow a 'Z' traffic pattern such as in a gowning room, but to maintain full effectiveness the cleaning frequency will need to be increased and life expectancy may be shortened.



ProtectaMat - is a loose laid mat designed to control foot borne contamination in areas of light traffic. Ideal for use at entrance/exit ways to small laboratories.



CleanZone - is high performance contamination control mat or floor covering designed to attract, collect and retain viable and non-viable contamination. Suitable for light wheeled traffic and heavier pedestrian flows. Available in a range of mats or floor coverings to suit your facilities needs.



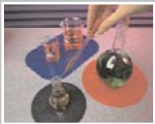
WorkZone - is a heavy duty version of CleanZone designed for use where there are concerns about contamination and cross contamination from personnel, and the wheels of carts including pallet trucks, fork lifts, trolleys & vessels.



Cleaning - Dycem recommend their high performance range of cleaning products and equipment, designed to maximize product performance and life cycle.



BenchMat - prevents the movement and loss of small components. Also use in the laboratory to cushion and stabilise fragile equipment.



Non-Slip Products - effectively cushion, stabilise and protect products and equipment. Available in reels, mats, self-adhesive panels and discs.



Dycem Ltd, Ashley Trading Estate,
Bristol, BS2 9BB, United Kingdom

Tel: +44 (0) 117 955 9921
Fax: +44 (0) 117 954 1194
Email: uk@dycem.com

Dycem Ltd USA, 83 Gilbane Street,
Warwick, RI 02886, USA

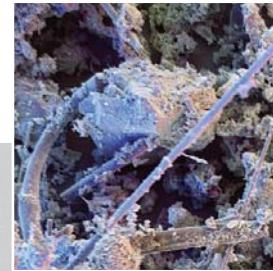
Tel: 1-800 458 0060
Fax: 401 739 9634
Email: info@dycemusa.com

www.dycem.com



Certificate No. FM23716
ISO 9001:2000

Distributed by:



Stops contamination in its tracks

High Performance
Contamination Control Zones

www.dycem.com